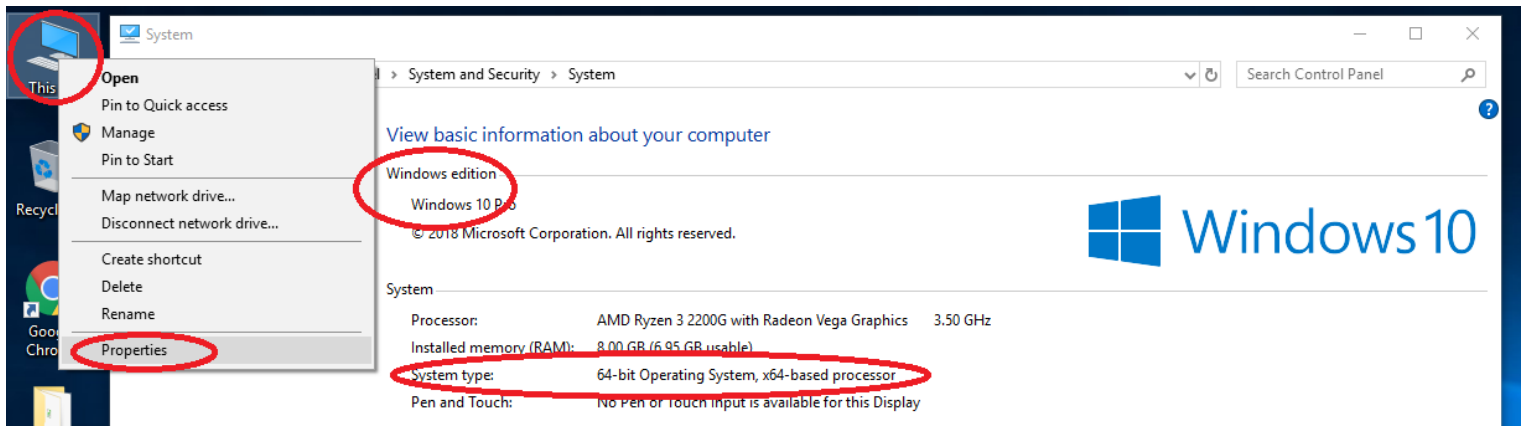


NAN_CSY_x4 Manual

Driver installation:

To use this program you must install the cp210x driver by using the following steps:

- 1) Open the Driver folder (which is located with the files you received)
 - 2) In the Driver folder, open the folder relevant to your operating system.
 - 3) If you have a 64-bit operating system launch CP210xVCPInstaller_x64.exe, if you have a 32-bit operating system launch CP210xVCPInstaller_x86.exe instead.
- If you don't know whether you have a 64 or 32 bit operating system, right click: This PC / My computer, click properties and check the system type.

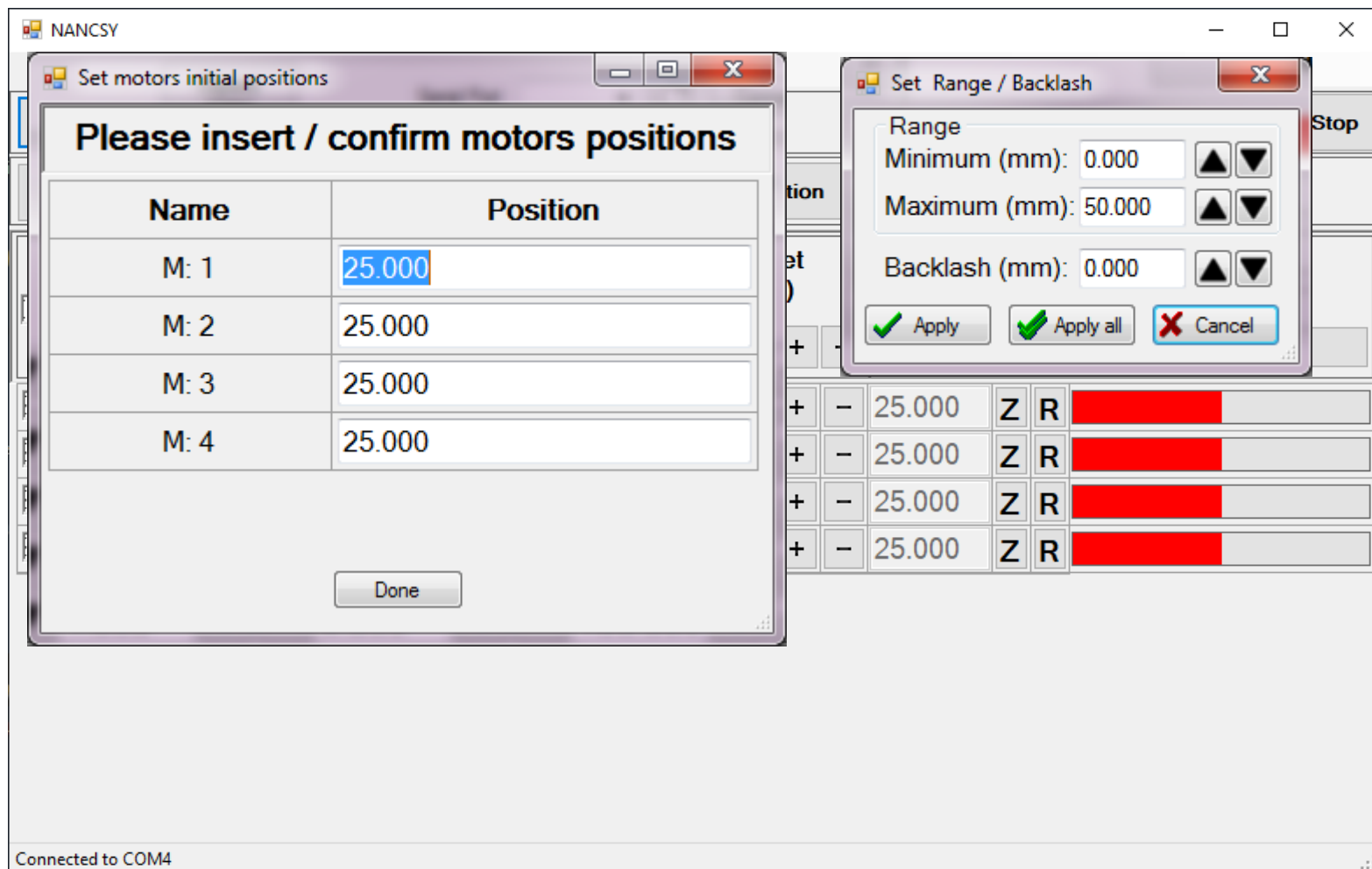


Application manual:

After the driver is installed the application is ready for use.

Application images:

1)



2)

3)

Connection:

Before launching the application and turning on the power you should connect the USB cable to the device.

To launch the application, navigate to the "application" folder and launch "NANCSY.exe".

The moment you launch the application it will automatically attempt to connect to the device.

If for some reason it fails to connect, the text of the status label at the bottom left will change to: "disconnected".

Try to disconnect and reconnect the USB cable then either go to file (top left) → "Reconnect" or relaunch the program.

If the problem persists, you can go to file → "Toggle Connection Menu" and connect manually.

After you launch the program, you can turn the power on.

Set motor position:

The moment the application is connected to the device, you will be asked to set the current position of the connected motors (image 2 page 2).

Simply write the positions and click done.

You can return to this menu at any time by clicking the "Set position" button.

Notes:

You can show or hide notes by clicking the "Notes" button.

The notes, will be saved between sessions.

Set range and backlash:

You can reach this menu (image 3) by double clicking the progress bars or notes.

If you click "Apply", only the selected row's settings will be affected.

"Apply all" will affect all rows with a checked checkbox.

Stop

Immediately stops all running motors.

Run

Moves all motors with a checked checkbox from their current position to their target position.

If the target and the position are the same, the motor is not affected.

Up / Down

All motors with a checked checkbox will move in the direction held.

This button, must be held (not clicked and released).

First Row

Clicking the checkbox selects/deselects all other rows.

Clicking the up / down arrows moves all row with **selected checkboxes** the step size of row.

Changing the "Steps", "Velocity" or "Target" text boxes changes all other corresponding text boxes that have **selected checkboxes** in their rows to match the first row.

Zero



Sets the current position as the zero position.

Relative / Absolute



Toggles between viewing the absolute position or viewing the position relative to the Zero position.

Save

Saves the position of every motor with an exact time stamp in a text file.

If you did not click “Save new” this session, the file name is the date the save was made (year, month, day with no spaces) and is located in the “Saves” directory..

Save new

Allows you to create a new save file with the position of every motor and an exact time stamp in a text file, with the name and location of your choice.

Every time you click save **this session** it will add information to the same file(unless you create a new save by clicking “Save New”).